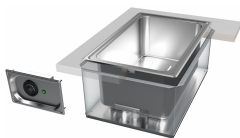


# Sparepart documentation



## BME-I 1/1

**Prod. No.:** 566262

### **Product details:**

Build-in bain-marie with fastening elements for installation in Resopal top surfaces etc. Seamlessly deep-drawn with all-round slosh<br>with drain connection piece<br>with insulation housing, heating mode: wet and dry, for GN 1/1 or its subdivisions<br>Temperature control from +30 °C to +110 °C<br>Rotary switch for thermostat with indicator lamp

## Spareparts



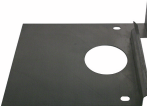





Image	Code	Name	Quantity in device
	<a href="#">367982</a>	Heating well, complete, 700 W (valid from 09/05/1997)	1.0 Each
	<a href="#">105020</a>	PIPE HEATER 20.21719.000 700W 230V (valid from 09/05/1997)	1.0 Each
	<a href="#">294096</a>	SENSOR MOUNTING F.GN (valid from 05/18/2006)	1.0 Each
	<a href="#">257793</a>	Mounting plate (valid from 09/05/1997)	1.0 Each
	<a href="#">145288</a>	MATTE,STEINWOLL- 1000X625x20 ALUF.1SEIT. (valid from 04/27/1998)	0.374 Square meter
	<a href="#">105127</a>	Capillary tube controller 55.13624.01 (valid from 09/05/1997)	1.0 Each
	<a href="#">105188</a>	LAMP,SIGNAL- SGF 14/6 E 230V GREEN (valid from 09/05/1997)	1.0 Each
	<a href="#">105429</a>	terminal block Wieland KL 24/3 SL (valid from 09/05/1997)	1.0 Each
	<a href="#">105121</a>	ROSETTE EGO NO. 67.62104 (valid from 09/05/1997)	1.0 Each

Image	Code	Name	Quantity in device
	<a href="#"><u>267063</u></a>	Seal for controller + switch (valid from 09/05/1997)	1.0 Each
	<a href="#"><u>105135</u></a>	TOGGLE,SWITCH- 110 DEG 247 (valid from 09/05/1997)	1.0 Each
	<a href="#"><u>105301</u></a>	HOSE,INSULAT. TYPE 01472 8/9 BLACK (valid from 09/05/1997)	0.6 Meter
	<a href="#"><u>262354</u></a>	Pipe drain G 1/2" L=19mm (valid from 01/07/1998)	1.0 Each
	<a href="#"><u>146648</u></a>	Teflon seal 36 x 27 x 2 (valid from 01/07/1998)	1.0 Each
	<a href="#"><u>83138</u></a>	WASHER,BACKING A 21,0 DIN 125 1.4301 (valid from 09/05/1997)	1.0 Each
	<a href="#"><u>144544</u></a>	RING,SEAL-KLINGERIT 1X26X21 1/2" (valid from 01/07/1998)	1.0 Each
	<a href="#"><u>376256</u></a>	Extension 1/2"x60 VI 1513 (valid from 01/07/1998)	1.0 Each
	<a href="#"><u>221393</u></a>	Clamping el.2 rests s/s sinks 28-40exp. (valid from 01/07/1998)	6.0 Each